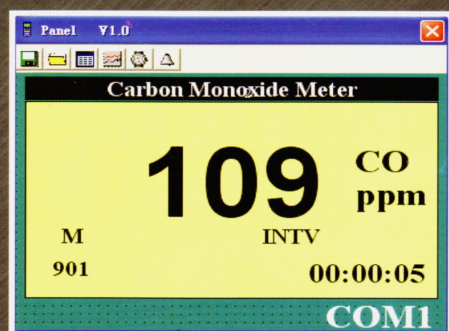


1372 CO Analyzer

- CO Range : 0 ~ 900 ppm (CO)
- Max Hold with Time Stamp
- Alarm level Setting
- Replaceable Sensor
- Data memory / Read (99 sets)
- RS-232 Interface / Software (TES-1373)



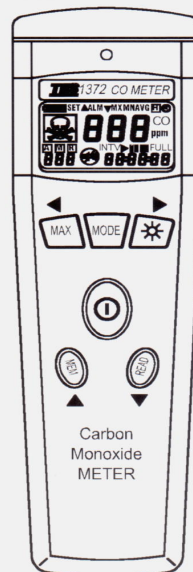
TES

Reliable in Quality

1372 CO Analyzer

FEATURE

- CO : 0 ~ 999 ppm range.
- MAX Hold with Time stamp.
- Alarm level setting.
- Replaceable sensor extends meter life.
- Stabilized electrochemical CO sensor.
- Automatic sensor zeroing upon start-up.
- Auto power-off time setting.
- Typical three year sensor life, one year calibration cycle.
- Manual Data Memory and Read function (99 sets).
- Auto Data Memory and Read function (999 sets).
- Auto Datalogger (14000 sets). (1373)
- Backlight display function.



SPECIFICATIONS

Measuring Range	0~ 999 ppm
Resolution	1ppm
Accuracy	±5% of reading or ±2ppm, which is greater.
Sensor Type	Stabilized electrochemical Gas-specific (CO)
Typical sensor life	3 years
Auto Data Memory Capacity	999 sets (Direct reading from LCD display)
Manual Data Memory Capacity	99 sets (Direct reading from LCD display)
Auto Datalogger Capacity	14000 sets (Only download by PC). (1373)
Operating Conditions	0°C ~ +50°C 15 ~ 90% R.H.
Power Source	9V battery
Battery Life	Approx. 100 hours
Size	170(L) × 52(W) × 38mm(H)
Weight	Approx. 180g with battery
Accessories	Instruction Manual, Battery. (1372) Instruction Manual, Battery, Software CD Rom, RS232 Cable & Carrying case, AC adaptor. (1373)

TES**TES ELECTRICAL ELECTRONIC CORP.**

7F, No.31 Lane 513, Rui Guang Rd., Neihu Dist, Taipei, Taiwan

Tel : (02) 2799-3660 Fax : 886-2-2799-5099

E-mail : tes@ms9.hinet.net

<http://www.tes.com.tw>